



19—22 APRIL, 2019.....

G E M B O R E E

.....ROCKHAMPTON

JULY NEWSLETTER

AUSTRALIAN JOURNAL OF MINERALOGY



After a two year hiatus, the Australian Journal of Mineralogy (AJM), a joint production of the State Mineralogical Societies in Australia, was revitalised in June 2017 under new editorial management in WA.

AJM Publications is **sponsoring GEMBOREE 2019** with an advertisement in the Australian Journal of Mineralogy V19.2, which will be published around the Christmas break.

If you want to know what's happening in minerals in Australia, the best place to find out is the Australian

Journal of Mineralogy. It contains a wealth of material, published on high quality stock with numerous colour photos. Back issues are available and will be on sale at the **AJM space at the 2019 GEMBOREE**.

For subscription details and details of Journals for sale please send a short email to ajm.secretary.treasurer@gmail.com

WINTON TRIP 13-14 July

Pat and Bob Handley were guests of the Queensland Boulder Opal Association at the annual Winton Opal Festival. Pat manned our information table and Bob chatted with the traders. People generally were interested after they realised that it was the **GEMBOREE**, not a **Jamboree**, that was being promoted. On the Friday evening Pat and Bob very much enjoyed the Boulder Opal Jewellery Design Awards Evening and dinner. **A big thank you the QBOA!**

Despite being remote, Winton has a lot going on. There were many tourists, mainly southerners avoiding the cold, who had come for the Festival and for the Dinosaur attractions. Winton also hosts an Outback Festival every second year (September 2019), an Outback Writers' Festival at the end of June, an Outback Film Festival which runs for 9 days early in July, and is home of the recently rebuilt Waltzing Matilda Centre. The Council has plans to build a film studio by next year so the town can also become the film hub of regional Queensland. Since 2007 Winton has welcomed several film makers with the movie, *Mystery Road* (Ivan Sen), just one to be filmed there. (The Morning Bulletin, Rockhampton, 19 July)

In this newsletter read about the AJM, the promotional trip to Winton, meet two of our sponsors and another trader. There is also another offer on off-site accommodation and a copy of our first media release.



THIS MONTH'S TRADER

On their journey to Winton Pat and Bob Handley stopped by to meet Ray Richardson from Crystal Mining of Anakie. Ray is the great-grandson of Archibald Richardson who was the first to discover sapphires in the Gemfields in 1875. He has been a commercial miner for 40 years and is involved in all phases of the industry. His sapphires are cut in Thailand and his jewellery is made by Francis Barthe, a French jewellery designer living in Thailand.

Ray is not only a miner: he is also a collector of famous sapphires and cars and a cricketer. As well as trading rough and cut stones and sapphire jewellery at the GEMBOREE, he is putting together a display of some of the famous sapphires in his collection, three of which are shown below. They are L-R: the 203 carat Stonebridge Green, discovered at Norman's Hill by Mick Stonebridge in 1937 (most famous); the 83 carat Tomahawk Tiger (second most famous) and the Pride of Tomahawk (226 carats).



The glass in the spectacular sculpture at the Anakie-Sapphire Road intersection, marking the gateway to the Gemfields, is imprinted with images of real stones including the Tomahawk Tiger and the Stonebridge Green.

For 20 years Ray has been the organiser of Richos 11 (all Richardsons), a country cricket team that has worked its way up to first class. As well as playing in the annual Country Cricket Competition in Rockhampton they have played in Vietnam and Thailand. Through their fundraising efforts they raised \$104,000 which they donated to the War Graves in Thailand and to an orphanage in Vietnam.



NOTE TO ALL TRADERS

We would love to have your story in the Newsletter so if you are thinking of writing something please send it in. It is a great way of making yourself known and having people look out for you at the GEMBOREE.

BE SURE TO LOOK OUT FOR CRYSTAL MINING AT THE GEMBOREE



MEET OUR SPONSORS

GEMBOREE 2019 is very fortunate to have some wonderful sponsors, all of whom are listed on Page 6. This month we introduce you to the first two to offer their assistance.



The team at Advance Rockhampton Region is doing a great job to help us promote the GEMBOREE. They have prepared the booklet for printing, designed our Flyers and set up the Facebook page - GEMBOREE2019. As well they have put our information on their website: <https://www.advancerockhampton.com.au/Visit/GEMBOREE> and organised a media release earlier this month.

Advance Rockhampton is a division of Rockhampton Regional Council and is responsible for delivering and implementing Rockhampton Regional Council's Economic Development Action Plan. Focusing on 10 key industries, Advance Rockhampton is driving forward the region's long-term economic growth with three main areas of focus – Advance, Live and Visit.

GEMBOREE have been working closely with the Tourism unit at Advance Rockhampton to ensure a memorable experience for visitors during GEMBOREE 2019. For more information on Rockhampton Tourism and things to do in our Region visit www.advancerockhampton.com.au/visit.

JIM AND JENNY ELLIOT OF COOLAMON MINING

Jim and Jenny were the first to offer their assistance. They had for many years followed the GEMBOREES but they no longer travel enormous distances and now



participate only in the Anakie Gemfest. They have, however, decided to honour the industry that has been a part of their life for over thirty years by mounting

one last major exhibition at the 2019 GEMBOREE. Our first meeting with Jim and Jenny was early in 2017. Not only have they donated fabulous sapphires for first prize in our Raffle, given a lot of good advice and made valuable introductions, they have also organised a contingent of traders from the Gemfields to participate in the GEMBOREE.

All the sapphires they sell come from their own mines so they are able to guarantee the authenticity and origin of the stones and issue signed certificates to this effect. Coolamon Mining has also instituted a very strict policy of not ever being involved in chemical modification of their stones. They believe that even the 'simple' heat treatments that have been a part of the Sapphire Industry for over 100 years should be disclosed to buyers, so that those who wish to purchase a completely natural, untreated sapphire may do so with certainty.

MAKE COOLAMON MINING A MUST SEE AT THE GEMBOREE



ACCOMMODATION (if you don't intend to camp)

The Marketing & Business Development Manager of the **Edge and Empire Apartment Hotels** has recently contacted AFLACA with an offer of a 10% discount on their apartment sites during the GEMBOREE. Below are some more details on their award-winning properties that are just 1.3km from the Showgrounds.

Empire Apartment Hotel

Empire's 4.5 star fully self-contained apartments are modern, spacious, have their own balcony – and come stocked with Molton Brown of London bathroom products and T2 Tea. The property also has free WIFI in the rooms, three onsite dining options with chargeback, a gym and tropically landscaped pool, 24hr reception, and undercover secure parking. It is located in the heart of the CBD Riverfront Precinct, a block from the Retail Shopping Mall, Supermarkets, Art Gallery, a plethora of Cafes and Restaurants, and the Pilbeam Theatre. Visit : <http://empirerockhampton.com.au/rooms/> to view rooms.

Edge Apartment Hotel

Designed to capture the panoramic river, hinterland and city views offered by the unique riverfront location, The Edge Apartment Hotel is Rockhampton's leading 4.5 star apartment hotel. Ideally positioned in Rockhampton's developing main accommodation, dining and entertainment CBD Riverfront Precinct, The Edge Apartment Hotel features modern hotel rooms plus 1,2 & 3 bedroom fully self-contained apartments, bar and restaurant. Modern, stylish and packed with the luxuries you would expect from a leading hotel, your new home away from home is The Edge Apartment Hotel. To view rooms <http://www.theedgeapartments.com.au/gallery.html>

Booking shortcuts

Edge Discount Link: <https://goo.gl/ypXq9L> or call 0749301000 and quote 'GEMBOREE'

Empire Discount Link: <https://goo.gl/KssNN6> or call 0749360000 and quote 'GEMBOREE'

The discount can also be activated manually by typing in 'GEMBOREE' in the promotional code on the websites.



MEDIA RELEASE ON COUNCIL WEBSITE

<https://www.advancerockhampton.com.au/Visit/Blog/GEMBOREE-2019>

National Gem show expected to fill Rockhampton next Easter

Published on 10 July 2018



Rockhampton has been chosen to host Australia's largest national gem and mineral show which will bring more than 5,000 visitors to the Region during the 2019 Easter break.

The 55th annual GEMBOREE will be held at the Rockhampton Showgrounds from 19-22 April and will showcase gemstone and minerals activities of

Australia to local, national and international visitors and exhibitors.

Rockhampton Region Mayor Margaret Strelow said GEMBOREE adds to the growing list of national events making Rockhampton their choice of location.

"It's very fitting for our Region to play host to a tradeshow of this kind especially with our roots in the Mount Morgan Gold Mine and with a number of Gemfields in neighbouring communities, Rockhampton is the best vantage point to explore these unique attractions in Central Queensland," Mayor Strelow said.

"We know the importance of ensuring the Region is alive with events during the Easter break and an event like this bringing thousands of visitors is a fantastic opportunity for our community to experience something new and it's great for our local economy too."

2019 GEMBOREE Coordinator Arthur Cleary said the organisation is aiming to make this years' event the largest GEMBOREE to date.

"For the first time we will include an international symposium sponsored by the Gemmological Association of Australia which will attract even more national and international visitors than normal with a great program of presentations that will interest gemmologists and jewellers," Mr Cleary said.

"In addition to a vast array of rocks, fossils and gems, the GEMBOREE tradeshow will be a display of the finest lapidary work with demonstrations and workshops as well as jewellery making competitions which will attract competitors across Australia. Patrons will also have the opportunity to join field trips in the local area."

Mr Cleary said the event is organised and coordinated by volunteers of the Queensland Gem Clubs Association (QGCA) and will cost in excess of \$250,000 to run.

"To help us make this the greatest GEMBOREE event that Australia has ever seen, we are inviting locals, clubs and organisations, gemstone businesses and tourism operators to partner with us," Mr Cleary said.

For more information visit www.aflaca.org.au/gemboree.

GEMBOREE 2019

FUNDRAISING RAFFLE

Tickets now on sale from

www.raffletix.com.au/Gemboree2019

\$5 each, drawn Monday 22 April 2019



8.5ct Sapphire Pendant

Sapphires Donated by

Coolamon Mining

Designed and Fabricated in

Gold by

Judith Hopwood

Value \$5,934



**Chrysoprase and Sapphire
Earrings set in Gold**

Designed and Donated by

Rod Beattie

Value \$4,168

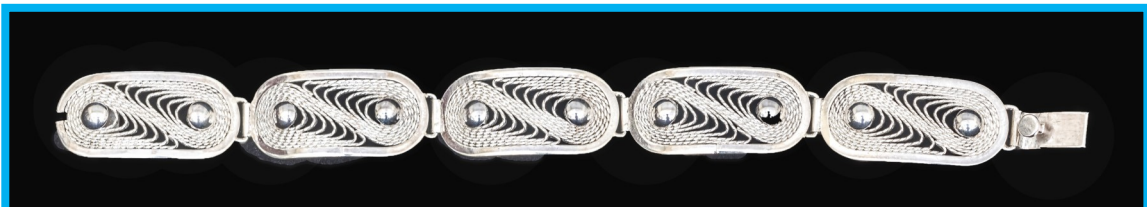


**Boulder Opal and Sapphire
Brooch/ Pendant set in Gold**

Designed and Donated by

Rod Beattie

Value \$3,905



Silver Filigree Bracelet with matching Earrings

Made and Donated by *George Weier*

Value \$1,185

Valuations donated by





SPONSORS



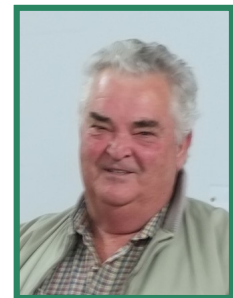
Jim and Jenny Elliot
Coolamon Mining



Rockhampton Girls
Grammar School
Est 1892

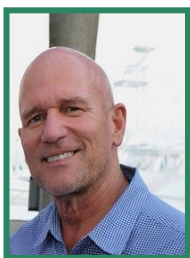


Rod Beattie
Capricorn Gems



George Weier
Silversmith

AMBASSADORS



Ian Bone
GEMBOREE Marketing
Ambassador,
Promoter of CQ Gemstones

Janice Moriarty
Central Highlands Ambassador
Doctoral Candidate, USQ
Principal Consultant **JM2Solutions**
EMERALD QLD



THE GEMBOREE TEAM

(GEMBOREE2019@Outlook.com.au)

- Event Coordinator, Sponsorship , Trading
- ARTHUR, 0419 794 665 (Text preferred)
- Treasurer, Competition - PALMA, 0417 716 211
- General Enquires - JANETTE, 0428 224 979
- Competition - DIANE, 0407 784 762
- Assistant Coordinator - BOB, 0407 341 400
- Publicity, Newsletter - PAT, 0400 818 029
- Camping - RUSSELL, 0429 047 003 (Text only)
- Field Trips, Catering - VINCE, 0403 350 898