



19—22 APRIL, 2019.....

G E M B O R E E

.....ROCKHAMPTON

OCTOBER NEWSLETTER

ONLY SIX MONTHS TO GO!

The GEMBOREE Committee is hard at work. Bookings from traders are being finalised, activities investigated and plans of the camping grounds are being drawn up.

It is the hope of the committee that many will take advantage of the **extended camping period**. The camping area is available from **12 noon Tuesday 16th April until 10 a.m. Monday 29th April**. Those who last visited Rockhampton for the 2002 GEMBOREE will notice many changes.

Rockhampton Regional Council, with its subsidiary Advance Rockhampton, are working hard to promote the economic development and liveability of the region. By staying those extra days you will be able to take advantage of what the city and surrounding region have to offer as well as participate in planned field trips and excursions.

What is there to see and do?

Victoria Park precinct is within easy walking distance of the Showgrounds. It is a pleasant area for walking and includes the 2nd World War Memorial Aquatic centre which has a 25m and a 50m pool plus other facilities. Entry is only \$2.50. There are two picnic sheds right over the river, perfect places for an early dinner or to throw in a line.



Area of Showgrounds for GEMBOREE is left of the line

INSIDE

- Trader, Darren Arthur from Dazlyn Gems
- Trophies - Dorothy Caladine
- Fossil finds near Gladstone
- Capricorn Caves Fossil Tour
- Gladstone District Gem Rock & Mineral Club
- Raffles and Sponsors

RIVERSIDE, the newly developed river precinct grows ever more popular with visitors and locals alike. Features include the Boathouse Restaurant with a wrap around balcony featuring floor to ceiling glass walls, a state of the art playground and the Water Jet Plaza suitable for kids of all ages. Public artworks reflect community identity and heritage listed buildings are enhanced by feature facade lighting. Another bonus is free WIFI.

Kershaw Gardens reopened in August after severe destruction by Cyclone Marcia led to closure in 2015. These native gardens have been revitalised and boast new play and water features as well as the iconic waterfall and the monorail.

Mount Archer forms the scenic backdrop to Rockhampton and provides spectacular views. A new 500m elevated canopy walk was opened last Easter and there are several walking tracks (500m-14km).

The Rockhampton Botanical Gardens are regarded as one of the best in Australia. They include a Japanese Garden, Cenotaph, zoo, a kiosk and playground with plenty of places to walk or sit and relax.

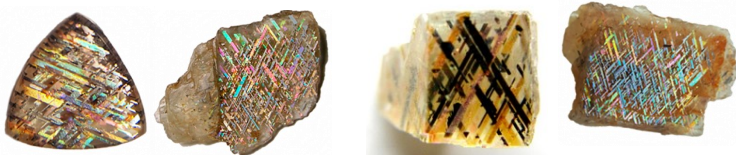
The list could go on, and that is just for Rockhampton. For more see <https://www.advancerockhampton.com.au/Visit> and <http://online.anyflip.com/ekgd/eowb/mobile/index.html>

The Capricorn Coast is only 40 miles away. Like Rockhampton, it is improving all the time and has many attractions and fabulous scenery. Information on the coast can be found on

<http://www.southerngreatbarrierreef.com.au/destinations/capricorn-coast>

ACCOMMODATION

RED HOT SUMMER will be performing in Rockhampton on Easter Saturday and they are expecting a crowd of up to 10,000. If you are not camping, book soon as some motels already have bookings for next Easter. Council suggests [Trip Advisor](#) as having the most comprehensive list, although booking directly with the provider is recommended.



THIS MONTH'S TRADER

DARREN ARTHUR

DAZLYN GEMS



www.rainbowlattice.com

facebook.com/rainbowlatticesunstone/

Darren Arthur's business is aptly named Dazlyn Gems as he specialises in Rainbow Lattice Sunstone, one of Australia's most unique gemstones. As well as this specialty, Darren has other stones. He focuses on the finest qualities of colour, clarity, and cut with a range from the finest quality precious gems and rare, unusual stones to standard calibrated faceted stones and cabochons. He is also a gem cutter and a jewellery manufacture and repairer. Darren has provided the following information about his speciality.

Rainbow Lattice (One of the most unique gems on the planet)

A very rare gem found in only one very small area in Australia at Utnerrengatye (Rainbow Caterpillar) Mine, Mount Riddoch Station, Harts Range, Northern Territory.

It was first discovered in late 1985 by Darren Arthur and Sonny Mason (dec) who happened upon it whilst scouting an area around an unlisted old abandoned Mica mine.

It was identified by the GIA who declared it a new gem variety in 1989 (see Gems & Gemology Vol XXV - Spring 1989). First tests described the lattice as Ilmenite, with recent tests proving it to be Magnetite as detailed in an article by Liu J., Shen A.H., Zhang Z., Wang C. and Shao T. (2018), 'Revisiting rainbow lattice sunstone from the Harts Range, Australia'. *Journal of Gemmology*, Vol. 36, No. 1, pp. 44–52

Rainbow Lattice Sunstone is a very unusual combination

Firstly it is a type of Feldspar mineralogically known as a "Perthite".

This variety is a true MOONSTONE which is made up of 75% Orthoclase $K(Al, Si_3O_8)$ Potassium Aluminium Silicate and 25% Albite $NaAlSi_3O_8$ Sodium Aluminium Silicate.

Most of the material from our mine is moonstone (displaying Adularescence).



Features

Adularescence (moonstone effect also known as "schiller"). This phenomena is due to a layer effect, where thin inner strata of two types of Feldspar intermix, *exsolution regions of Albite (sodium feldspar) in Orthoclase (potassium feldspar)*. These layers scatter light either equally in all spectral regions producing a white schiller.

Aventurescence (sunstone effect) - Most of this material has at least some Hematite(Fe_2O_3) that are small mainly yellow to deep orange platelets which can be hexagonal shape and are generally in one plane within the Feldspar. This effect is known as Aventurescence or Sunstone effect and gives most of the gem its orange glow.

Iridescence (rainbow effect) due to crystallographically oriented ex-solution crystals of Magnetite (Fe_3O_4). These occur as blades or flat ribbon like strips and triangular platelets in one plane within the orthoclase structure. The Magnetite is opaque and metallic and can display iridescence due to oxidization of the Magnetite which in most cases has pseudomorphed into Hematite.

In each layer the lattice has changed direction (north/south), "like pages in a book with every second page upside down." This process is known as Lamellar twinning. The lattice arrangement is also referred to as "Sagentic twinning". During the slow solidifying process of the Feldspar, excess iron and oxygen are drawn together and Magnetite starts forming. In an attempt to form a three dimensional octahedron it is constrained within the layering of the Feldspar and therefore can only form in micron thickness. It forms within an octahedral plane which is an equilateral triangle and does not have enough material to form a large triangle, so it creates what can be described as a skeletal triangle across the Feldspar body.

FIND DAZLYN GEMS IN THE WALTER PIERCE PAVILION

DARR

TROPHIES

DOROTHY CALADINE



During her lifetime, Dorothy Caladine contributed two annual trophies to further the interests of Juniors in Competition - **Junior Champion Lapidary** and **Junior Carving**. Her daughter Rhonda Sabella now contributes these trophies in her memory and for the encouragement of the children that she adored. Rhonda has kindly supplied this information about her mother's involvement in the lapidary movement.

In 1966 Dorothy co-founded the Greenwich Gem Club, being one of their first teachers and at different times held the positions of secretary and treasurer. She was particularly interested in children and was behind their admission into this club and many went on to win numerous prizes in competitions. In 1974 the Greenwich Gem Club passed a motion to become adults only and so Dorothy formed the Lane Cove Gem and Craft Club with the express intention of teaching juniors and this was established in her own home where she converted a number of rooms into a workshop area and library. She continued to teach several days a week until her death in 2005.

It was on her representation that the Junior Lapidary Section was introduced by the Royal Agricultural Society Easter Show, to the State Gem Exhibition or Gemkhana and the National Gem Show - GEMBOREE.

In 1976 she qualified as a judge and contributed her expertise to the Rules and Judging Committee. She regularly conducted weekend workshops in both Sydney and rural areas, passing on her knowledge, particularly in the area of carving. The Gem and Lapidary Council of NSW awarded her life membership in 1992.

Her particular interest related to carving, especially shell at which she excelled and she was the only



cameo carver in Australia, rivalling the standard produced in Italy. She regularly received commissions from as far afield as Asia for her beautiful work.

She not only did gem cutting and carving but also faceted, did silver smithing and the almost lost art of scrimshaw.

She was recognised by the Lane Cove Council in 1997 receiving the art award for her contribution to the community life of Lane Cove.

In 2000 she was recognised for her outstanding service to children, receiving the NSW Children's Week Award, and was nominated for Senior Australian of the Year.

These are some of Dorothy's words, taken from a newspaper article, source unknown. On creating a cameos Dorothy said that each one is made from a Helmut shell and that there is an art to choosing just where to cut the ovals from and how to get the best out of each shell. She said that the apricot comes from the Philippines and the darker brown comes from the Bahamas.

'I use the thicker parts of the shells to make double sided pendants and brooches.

It takes me several weeks to complete a cameo, and all the fine detail has to be finished with a surgeon's scalpel. One cameo I carve has a mother and two babies. The eyes, mouths, ears and noses all have to be carved into a couple of millimetres of shell.'

Dorothy also worked in cow horn and carved magnificent scenes in mother-of-pearl from Western Australia.

GOOD LUCK to all junior lapidary and junior carving entrants. Your trophies honour a truly talented lady.



FOSSIL FINDS NEAR GLADSTONE

From CQUniNEWS, 10 MARCH, 2018

Two CQUniversity-trained geoscientists have assisted in the discovery of a new fossil site in the Gladstone area as part of a Queensland Museum-led research project.

CQUni Senior Lecturer in Geosciences, Dr Andrew Hammond, Central Highlands Science Centre researcher, Dr Anita Milroy, and Queensland Museum Head of Geosciences, Dr Andrew Rozefelds, have found fossilised insects and rainforest flora, dating back 45 million years – including what appears to be the first evidence of horsetails (Equisetatales).



Dr Hammond said the geological history of the area where the fossils were found was complex and showed signs of recent faulting.

"The fossils were deposited in a graben (which is like a small rift valley) 18 km long and up to 4.5km wide and sediments approaching a kilometre in depth. These faulted blocks formed at a time when Australia was still connected to Antarctica and was at a higher palaeo latitude (which means Australia was further south than what it is now)," he said.

<https://www.cqu.edu.au/cquninews/stories>

From The Observer, Gladstone 21 May 2015

Well-preserved turtle fossils dating back about 50 million years have been discovered in an oil shale mine site near Gladstone where a crew from the Australian Age of Dinosaurs (AOD) at Winton has been digging looking for fossils to display at its natural history museum.

"There is a deposit in the vicinity of the oil shale that is



the remains of a big old lake, like a big lake system," Executive chairman of AOD David Elliott said.

'The lakes have dried up obviously over a number of years so there are all these crocodiles and turtles and that sort of stuff that was around, and you are looking at around 50 million years old.'

Mr Elliott said that the fossils that were discovered were about 15 metres below ground level.

<https://www.abc.net.au/news/2015-05-20/turtle-fossils>

FOSSIL TOUR CAPRICORN CAVES

Capricorn Caves has offered a Special Fossil Field Study in conjunction with the GEMBOREE. The plan is to spend two hours at Capricorn Caves, combining the usual Fossil Tour with time in the Bone Room. At least eight are needed for the trip to go ahead, with a maximum of fifteen. The cost will be \$40. Details of what the Fossil Tour involves can be found on <http://capricorncaves.com.au/tours/> GEMBOREE visitors who wish to visit The Caves at other times are offered a 10% discount.

We are saddened by the sudden death on 15 October of Capricorn Caves director, Ann Augusteyn. Ann was most supportive of the GEMBOREE, inviting the committee to man an information stand at their June Fossil Day. The day was a great success with thousands of fossil hunters coming along. Ann was a community leader who was well respected in the tourism industry, developing Capricorn Caves into one of Queensland's Hero Experiences and a Best in Queensland Experience. Ann's determination and passion for the region will be sorely missed.

A BRIEF HISTORY OF

GLADSTONE DISTRICT GEM ROCK & MINERAL CLUB INC

<https://www.facebook.com/GladstoneGemClub/>

By Roslyn van der Mark



Our club was founded on the 19th March 1964 and was originally called Gladstone Rock & Mineral Club, later changing its name to what it is today. Over the years the club activities were held in various places, and members worked at fundraising which included arts & craft, drink & hamburger stalls as well as setting up a tent on the water front during Harbour Festival selling slabs, stones bookends, clock faces etc to raise money with one thing in mind, to build their own gem club facilities. Eventually in 1991 the members were given land in the showgrounds to build their own club rooms.

Over the years the club has gone on many field trips to collect specimens from Mt. Hay, Turkey Station, Mt. Grim, Monal gold mine and many more. Some club members have taken a long weekend to go fossicking at Rosedale or Dawes as well as some taking a week out and going to The Willows or Tomahawk Creek.



During the years before becoming a member of QGCA and the formation of the C.Q. Association the club held competitions with the first being held in 1979. In May 1981 the C.Q. Gem show was held in Gladstone. Following this the club has held many gem shows of its own as well as being involved with the C.Q. gem shows. During the C.Q. shows many of our members have been successful in receiving places in the competitions.

The club has grown and has been successful in obtaining grants to purchase new machinery such as a burn out kiln, saws, and new faceting machines as well as setting up a silversmithing room with many new pieces of equipment.

With the help from these grants we have also been able to hold extra club activities including weekend workshops on wax & bone carving and creative design as well as a faceting workshop conducted by John Broadfoot.



With the Association of C.Q. many combined weekend field trips were held with trips to Glebe Weir, Proston & Springsure. As well as these field trips combined Xmas breakups have been held which have always been enjoyable.

Through the years we have seen a large number of members join, with some remaining and others going on their way to their next place of work.

Today we still have many members and they attend club sessions either on Wednesday afternoon for Jewellery making or Wednesday and Friday nights for silversmithing, faceting & cabochons. On the third Saturday every month the club conducts a casting session for members with set-up on Friday night for an early start on Saturday morning.

We hold our meetings approximately every 2-3 months on Sunday afternoons. At this time important matters are covered, field trips discussed and ideas voiced. At our last meeting we were advised about a couple of our members who, with friends, had formed a team to run for the Cancer Council's Relay for Life. This is a very important fund raising event and our club voted to donate funds to help support this cause.

GEMBOREE 2019

FUNDRAISING RAFFLE

Tickets now on sale from

www.raffletix.com.au/Gemboree2019

\$5 each, drawn Monday 22 April 2019



8.5ct Sapphire Pendant

Sapphires Donated by

Coolamon Mining

Designed and Fabricated in

Gold by

Judith Hopwood

Value \$5,934



**Chrysoprase and Sapphire
Earrings set in Gold**

Designed and Donated by

Rod Beattie

Value \$4,168

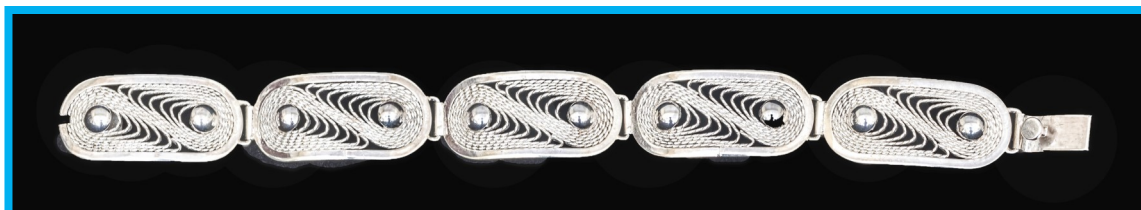


**Boulder Opal and Sapphire
Brooch/ Pendant set in Gold**

Designed and Donated by

Rod Beattie

Value \$3,905



Silver Filigree Bracelet with matching Earrings

Made and Donated by *George Weier*

Value \$1,185

Valuations donated by





SPONSORS



CARBINE RESOURCES
LIMITED



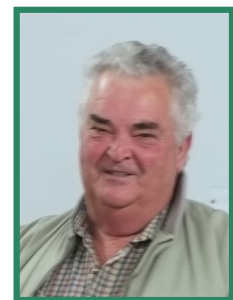
Jim and Jenny Elliot
Coolamon Mining



Rockhampton Girls
Grammar School
Est 1892

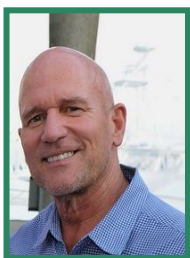


Rod Beattie
Capricorn Gems



George Weier
Silversmith

AMBASSADORS



Ian Bone
GEMBOREE Marketing
Ambassador,
Promoter of CQ Gemstones

Janice Moriarty
Central Highlands Ambassador
Doctoral Candidate, USQ
Principal Consultant **JM2Solutions**
EMERALD QLD



THE GEMBOREE TEAM

(GEMBOREE2019@Outlook.com.au)

- Event Coordinator, Sponsorship , Trading
- ARTHUR, 0419 794 665 (Text preferred)
- Treasurer, Competition - PALMA, 0417 716 211
- General Enquires - JANETTE, 0428 224 979
- Competition - DIANE, 0407 784 762
- Assistant Coordinator - BOB, 0407 341 400
- Publicity, Newsletter - PAT, 0400 818 029
- Camping - RUSSELL, 0429 047 003 (Text only)