



19—22 APRIL, 2019.....

G E M B O R E E

..... ROCKHAMPTON

NOVEMBER-DECEMBER NEWSLETTER



FIELD TRIPS

Field trip planning is well underway. The big announcement this newsletter is the tour created by the Gemmological Association and The Rockhampton Lapidary Club. This trip is open to all with attendees of the International Gemmological Symposium given first preference.

See page 7 for GEMBOREE day trip to Gemfields.

ROCK THE TROPICS TOUR

Information taken from

http://www.gem.org.au/rock_the_tropics_tour/

The Tropic of Capricorn showcases the results of an incredible geo journey that has seen species irradiated, sceneries transformed, and time buried in layers and folds. What remains is a living museum, a country embedded with great mineral wealth and tell-tale fossils. Discover spectacular landscapes that whisper of another world - reminding us that true beauty does indeed come from beneath.

Explore with us and discover the secrets of the ages in the treasures atop and layers below.

The adventure will leave Rockhampton on 23rd April 2019 and finish at Longreach Airport on 2nd May 2019 returning to Rockhampton or Brisbane visiting:

- Mt Hay Gem Park Thundereggs
- Blackwater Coal Museum
- Central Queensland University (Science, Technology, Engineering, Arts and Mathematics Class for youngsters)
- Australian BBQ with a difference including our wild life
- Clermont Gold Prospecting

- Open cut, Underground and private claim mines at the Central Queensland Gemfields, including Rubyvale and Sapphire
- Australian Age of Dinosaurs
- Opal Mining

Side excursions to:

- Lake Maraboon (Redclaw Fishing)
- ANZAC Dawn Service
- Ilfracombe Artesian Spa
- Stockman's Hall of Fame,
- QANTAS Museum
- Thompson River Cruise
- Waltzing Matilda Centre

Tour on a comfortable air-conditioned coach. Tour includes wholesome country meals and clean comfortable accommodation. The side excursions are included, no more to pay except your return Brisbane or Rockhampton via air or coach.

Australian Dollar is very low at present in relation to US—approx 71 cents or EU approx 63 cents.

Very limited numbers. Grab your spot now. **Deadline for booking 26 January 2019.**

This tour is only \$3290 AUD (approx US\$2336)

BOOK NOW

Email: travel@gem.org.au

INSIDE

- Trader, Troi Thelin, Big Sky Stones and Jewellery
- Trophies - Val and Tony Annear
- How to treat Andamooka Opal Matrix
- New Sponsor—Great Keppel Island Hideaway
- Nambour Lapidary Club
- Day Trip to Gemfields
- Raffles and Sponsors

THIS MONTH'S TRADER



TROI THELAN

Troi has kindly supplied this story of his involvement in the lapidary and jewellery trade.



I was US born raised and moved to Australia 2003. I now make my home in Mackay, Qld. In 1986 I started out making beaded jewellery and then began cutting cabs 1992. I now work with approximately 200 varieties of stones and fossils sourced from five continents.



Some of Troi's work at the Rockhampton Gem Expo

I began making silver jewellery in 1993. All the settings for the jewellery I sell are hand fabricated using US Fine 999 and Sterling 925 Silver. Since 1999 I have been doing hand casting using stone moulds. All my pieces are one-off.

Apart from doing shows I sell on Facebook, Instagram and at the Airlie Beach Markets. I also sell wholesale, having sold to The Parliament House Gift shop, The Boutique, Hayman Island, and the National Dinosaur Museum, Canberra. I also supply other shops



Troi Thelin
Silversmith, Lapidarist,
Artist, Sculptor, Chef

Finished work available / custom orders welcome

Follow me on Facebook & Instagram - PayPal available

[E. bigskygallery@hotmail.com](mailto:E.bigskygallery@hotmail.com)
M. 0404 990 737

Direct Deposits - NAB - BSB 082 939 - Acct.# 8318 46269



throughout NSW, QLD and the Northern Territory . I am currently trying to get onto Hamilton Island.

So if you like really unusual cabs and handmade jewellery stop in to my stall and have a look,
Thanx, Troi Thelin, Big Sky Jewellery & Stones

YOU WILL FIND TROI IN THE WALTER PIERCE PAVILION

QUEENSLAND TOURISM AWARDS 2018

The recently announced Queensland Tourism awards confirm that the journey to Rockhampton will give the opportunity to experience some of the best the state has on offer.

The Southern Great Barrier Reef region, incorporating Rockhampton, the Capricorn Coast, Gladstone and Bundaberg collected 10 awards at the presentation. Capricorn Caves received a Gold Award in the Tourist Attractions section and the Empire Apartment Hotel (see July Newsletter) received Gold for Deluxe Accommodation. For those travelling at a leisurely pace, Bundaberg Rum Visitor Experience received a Silver Award for Tourist Attractions and Bundy Food Tours received a Silver Award for Excellence in Food Tourism. Lady Elliot Island Eco Resort and Kelly's Beach Resort, Bargara, both received Bronze Awards.

WEBSITE UPDATE

Capricorn Enterprise has provided information as an addition to what was published in the October Newsletter

Capricorn Enterprise advises that a great regional 'go to' site is www.capricornholidays.com.au It includes information about all the attractions in both Rockhampton and the Capricorn Coast, as well as out West.

Capricorn Enterprise's ad in the GEMBOREE Booklet is the map on the inside cover.

TROPHIES

TONY and VAL ANNEAR feature this month. The Tony Annear OAM Memorial Trophy and the Val Annear Open Enamelling (Non-Jewellery) Trophy are donated respectively by AFLACA and the Victorian Gem Clubs Association.

Tony's interest in rocks stemmed from a school project on rocks set for his seven-year old son Peter in 1965. Tony bought Peter some books and a rock tumbler and soon Tony and the whole Annear family were hooked on rocks.

Tony had met Les Minter at GAA and in 1967 they founded the Nunawading Lapidary Club which quickly became the largest Lapidary Club in Victoria. Over a thirty-five year period, until his retirement to Bendigo, Tony held many positions in the club.

In 1967 he also co-founded, with Jean Culley, the Victorian Gem Club Association (VGCA), the first state body in Australia. At various times he held the positions President, Vice President, Secretary, Treasurer, Publicity Officer and Magazine Editor. Tony was the publicity officer for the inaugural Victorian Gemkhana, 1968, and was the Chairman or Secretary for another twelve.

He was one of the organisers of the Beechworth GEMBOREE (the first outside NSW) in 1968 and went on to be the secretary or treasurer of nine Victorian GEMBOREES. In 1975 Tony was the secretary of a steering committee formed to investigate the formation of a National Lapidary Body. The Australian Federation of Lapidary and Allied Crafts Associations (AFLACA) became a reality at the Gunnedah GEMBOREE in 1976 with Tony as Secretary, a position he held, with a few short breaks, until his death in 2005.

Tony's interest in Lapidary seemed to be more as an organiser than as a craftsman. His efforts were recognised with Life membership of the VGCA 1970, Life Membership to the Nunawading Club, 1972, the first Life Member of AFLACA 1984 and the Medal of the Order of Australia for Services to Lapidary, 1990.



*Beautiful enamel work by Val Annear and the late Ray Jonas
It hangs in the Nunawading Jewellery Workshop*

Val was also a founding member of the Nunawading and District Lapidary Club and has been active in many areas of the Club.

She has distinguished herself as a keen competitor in cabbing, showcases, enameling (see above), jewellery and faceting, not only at club level but also at Inter-club, State and Nationally. Among her many achievements is winning the very first City of Nunawading Rose Bowl for jewellery design. Val has served the club in many ways, organizing numerous activities and being involved in general committee and exhibition committees. She was club president 1968-75 and again 1998-2000. Val also represented the club on the V.G.C.A. and was involved in the organization of both Gemkhanas and GEMBOREES. Whenever volunteers were called for, she was always there with a willing and helping hand.

She found her work in teaching Juniors the finer arts of cabbing and enameling most rewarding and enjoyable. This is another example of Val's great service the club.

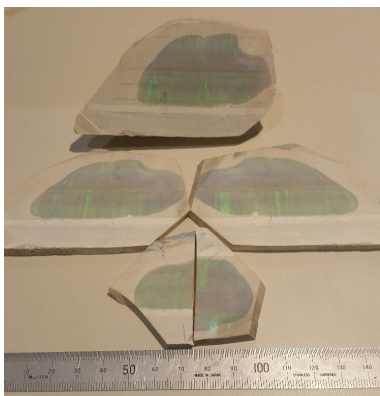
She is talented in other crafts also, including oil painting, water colours, doll making, dried flower pictures and dress making. The Princess capes and the Easter Bunny suit (lost), that were donated by VGCA for use at all GEMBOREES since 1983, were made by Val.

ANDAMOOKA OPAL MATRIX

The information in this article has been supplied by Tony Noel, co-convenor of the 2018 Willunga GEMBOREE and a possible outdoor trader for 2019. While no longer an opal miner, he has been involved in the industry.

Andamooka Opal Matrix

First of all Opal Matrix is mainly associated with the Andamooka Opal Fields in South Australia. I'm not really sure why but I think the reason is that Andamooka has a clay layer underneath the old sea floor.



This is where you find *Pale coloured Opal Matrix Slabs* round water worn pebbles and stones inter-mingled with opal right down to the clay level. I have even seen Opal penetrate cracks in the clay down to about eighteen inches.

As the microscopic silica passes through the kopie or decomposed limestone it will pick up minute particles of minerals which colour the silica and fill anything porous until it reaches the clay floor. In the section on treating Opal Matrix the first stage is desalination. As the old inland sea retreated and dried up salt penetrated anything porous so you need to desalinate the Matrix even before you try to treat it.

Not all Matrix contains salt, just as not all Matrix will contain opal silica that can be treated. There may be several levels which vary in depth and as soon as you think you know how things work, mother nature will bring you undone, so this is just a very simple explanation of how Opal Matrix is formed.

Treated Opal Matrix

Andamooka Opal Matrix is generally white or milky and is quite pasty looking. It is regularly treated to improve colour by creating a black body using carbon. This treatment involves a chemical treatment that is applied to the entire stone which is then marketed as Andamooka treated matrix opal.



Treated Opal Matrix Cabs



This 203ct Andamooka Opal set in an 18ct palladium choker band was presented to the Queen in 1954

A Brief Outline of Treatment Stages

Warning: NEVER let the temperature change suddenly – IT MUST BE GRADUAL – otherwise you'll find you have a jar full of cracked and broken pieces of matrix. Also use preserving jars as ordinary glass jars are likely to crack.

The first stage is **desalination** which involves soaking the matrix in water over a period of time to remove the salts. Heating the water can hasten the process.

Stage two is **dehydration**. Place the matrix in a preserving jar, only $\frac{3}{4}$ full, and heat in an oven set at between 65 and 90°C for at least four hours. Leave the jar in the closed oven and turn it off to ensure a slow cool.

The third stage is the **sugar process**. Fill the jar containing the matrix with a sugar mixture—1 cup of sugar to one cup of water. Cover with a glass plate and heat in the oven, 65-90°C, maintaining the temperature for at least two days. Turn off and leave in the closed oven until cooled to room temperature.

Stage four is the **acid process**. All sugar is wiped from the matrix with a damp cloth before it is placed into a jar $\frac{3}{4}$ filled with 90% proof sulphuric acid. It is then put back into the oven (65-90°C) for another two days. Turn the oven off and leave to cool to room temperature in the closed oven.

The final step is the **de-acid treatment**. Tip the acid and the matrix into a dish of warm water (acid into water) and place the dish under a tap and turn it on slowly. Let the water overflow the bowl and keep running the water until a piece of litmus paper placed in the dish does not change colour.

If you want to experiment with this process **please read Tony's full explanation**, which has been published in Gold Gem & Treasure and the American Lapidary Magazine, and is now available on the AFLACA website.

<https://aflaca.org.au/wp-content/uploads/2018/11/TreatingOpalMatrix.pdf>

MEET OUR NEW SPONSOR



GEMBOREE 2019 has a new sponsor, Great Keppel Island Hideaway which has kindly donated a Gift Voucher for 2 nights' cabin accommodation, valued at \$400.00. The voucher will be used as a lucky door prize. It will be valid during off-peak periods, but may be upgraded by the winner for peak periods (QLD School Holidays and Public Holidays).

GREAT KEPPEL ISLAND HIDEAWAY

Just 30 minutes off the Capricorn Coast, Great Keppel Island Hideaway is located on beautiful Great Keppel Island. The Hideaway offers an affordable Southern Great Barrier Reef holiday for everyone – singles, couples, families and groups. At Great Keppel Island Hideaway, you will find pristine beaches and gardens. An array of activities can be enjoyed on site or in the surroundings, including snorkelling, fishing and bush walks.

GKI Hideaway has beachfront cabins with ocean views and a fully licensed bistro style restaurant which offers a variety of meals including fine steaks, gourmet burgers, seafood, salads and pasta dishes.

Keppel Konnections, organised by the property, provides transport to the island. It is necessary to contact the property, phone 07 4939 2050, www.bookings@gkihideaway.com.au, to arrange this ferry service. It is important that this is organised prior to arrival and that guests let the property know their expected time of arrival as the ferry has limited departing times. Reception hours are as from 8:00 am until 5:00 pm.

Great Keppel Island is an island paradise where the 'squeaky-clean' white sand flows between your toes and the ocean sparkles before your eyes. As the largest island in the Keppel Group, Great Keppel is situated just north of the Tropic of Capricorn and on Australia's heritage listed Southern Great Barrier Reef. It is approximately 1454 hectares in size (around 3,500 acres and 43 kilometres in circumference) – home to seventeen pristine white sandy beaches. The island interior is rich with native flora and fauna, all waiting to



be explored.

Island bush walking tracks disperse trekkers around the island to beaches or spectacular lookouts. These vary in duration and difficulty, from leisurely strolls to challenging hikes. Private coves and pockets of fringing reef around Great Keppel Island are excellent for swimming, snorkelling and diving. Great Keppel Island is a **bird watchers paradise**, with over 90 species of birds identified, living among many different habitats including white-breasted sea eagles, Brahminy kites, ospreys, pied oystercatchers, beach curlews, honeyeaters, rainbow bee-eaters, pheasant coucals, friarbirds, kookaburras and rainbow lorikeets.

Dolphins are often seen close to the main beaches during winter months and **whale** numbers in Keppel Bay waters are increasing each year by 10 to 11%. They can be seen from April to November, with the majority coming north from June to August and returning towards the Southern Ocean from September to November. Whale watching tours are popular and are organised by the resort.



Lucky Door Prize GEMBOREE 2019

NAMBOUR LAPIDARY CLUB

<https://www.facebook.com/NambourLapidaryClubInc/>

Contributed by Frank Kelly

Nambour lapidary club premises are located in the Nambour showgrounds on the Sunshine Coast, off Coronation avenue.

The club came into being when a group of like-minded rock hounds got together in 1965 and decided to create the club, and to find a building where they could gather to pursue their mutual pastime. The first meeting was held in the Canegrowers hall. The joining fee was set at ten shillings, and two shillings for each meeting attended.

The first committee elected were: President, Mr P. Smith. Secretary, Mrs A. Morgan. Treasurer, Mrs H. Cuthill and Vice President, Mr Frazer. Mr R. Taylor of 4NA radio was appointed as patron.

For several years, the group operated out of various buildings until in 1975, they approached the then Maroochydore Shire council to lease what is now, our present premises.



Nambour Lapidary Club building

Over the years, as the membership increased, more and more adjustments needed to be made to organise the floor space and to accommodate the extra machinery. The building was soon used to its full capacity. Eventually, the existing building couldn't cope with the increased demand, and in 2012, an extension was built out to the limit of its restricted boundary. This greatly relieved the pressure on the members up until the present time, when again we find the need for more space. The present membership, although never static, stands at forty-six.

Nowadays, the club is well established and well



President Trevor and Secretary John take time off to pose

respected in the Nambour community. We are moving along nicely with all sessions well attended.

We are part of the family of ten gem clubs up the Queensland coast north from Nambour to Rockhampton, which forms The Queensland Gem Clubs Association Inc. The southern group of five, from Bundaberg to Nambour, form The Wide Bay Burnett Gem Clubs Association Inc.

For Nambour, the major events for the club include, in June, the Agricultural show followed in July by the massive Garden show. These shows are held in the Nambour Showgrounds. We are permitted to open on these days, and the events are good money-spinners for the club. Our biggest event of course, is our Gemfest, held every October. These days never fail to raise the most-needed money for the club.

With our increased membership coupled with the desire to introduce more activities within the club, including junior membership, the need to expand has again arisen and if this trend continues we will have to look for another premises, because, as stated, the building cannot be extended any further.

We look forward to the future, and hopefully to larger premises, whenever that will be.

Our committee members for 2018 are: President, Trevor Renshaw, Secretary, John Spencer, Treasurer, Susan Contini and Vice President, John Huelin.



PROPOSED FIELD TRIP TO GEMFIELDS EASTER SATURDAY, 20 APRIL, 2019



- Travel to the Central QLD Gem fields in a 57 seat luxury coach. (Min 35 required)
- **Depart the Show grounds at 6 am** sharp, and arrive at Sapphire at about 9.30am.
- On the way movies about the Gemfields will be shown and Rob, your guide who lives on his claim at the Gemfields for part of the year, will tell some stories about the Gemfields. He also has a great knowledge of the mining and agricultural country that you will be passing through.
- On arrival at **Sapphire** the first stop will be at **Pat's Gems**, where you will be served **morning tea** and **given a free bucket of sapphire wash** to be washed on site. Bound to contain some sapphires and zircons.
- Next stop will be the **Bobby Dazzler Sapphire Mine Tour**. At this point, half the group will be conducted on an **underground mine tour** while the other half has a **BBQ lunch** and vice versa.
- At both places there will be ample time to look at their excellent products and, if you wish, to make purchases.
- Depending on time there are other very good traders to visit and there are some unique buildings worth seeing.
- **Departure** from the Gem fields must be by **2.00 pm** in order to reach Rockhampton by 5.30pm, as this is the night of the Official Dinner.

If you wish to be on this trip, please make sure you book and pay early.

COST \$175

(Includes bus trip, morning tea, a bucket of wash,
mine tour and BBQ Lunch)

GEMBOREE2019@outlook.com.au



[GEMBOREE2019](#)



GEMBOREE 2019

FUNDRAISING RAFFLE

Tickets now on sale from

www.raffletix.com.au/Gemboree2019

\$5 each, drawn Monday 22 April 2019



8.5ct Sapphire Pendant

Sapphires Donated by

Coolamon Mining

Designed and Fabricated in

Gold by

Judith Hopwood

Value \$5,934



**Chrysoprase and Sapphire
Earrings set in Gold**

Designed and Donated by

Rod Beattie

Value \$4,168

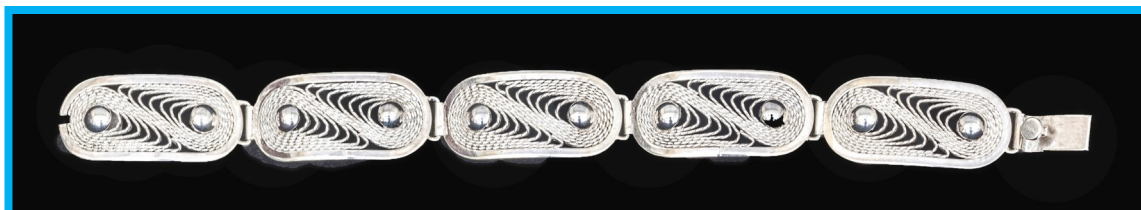


**Boulder Opal and Sapphire
Brooch/ Pendant set in Gold**

Designed and Donated by

Rod Beattie

Value \$3,905



Silver Filigree Bracelet with matching Earrings

Made and Donated by *George Weier*

Value \$1,185

Valuations donated by



SPONSORS



CARBINE RESOURCES
LIMITED



Jim and Jenny Elliot
Coolamon Mining



Rockhampton Girls
Grammar School

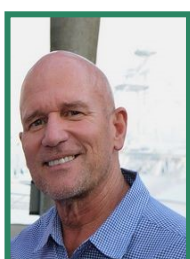


Rod Beattie
Capricorn Gems



George Weier
Silversmith

AMBASSADORS



Ian Bone
GEMBOREE Marketing
Ambassador,
Promoter of CQ Gemstones

Janice Moriarty
Central Highlands Ambassador
Doctoral Candidate, USQ
Principal Consultant **JM2Solutions**
EMERALD QLD



THE GEMBOREE TEAM

(GEMBOREE2019@Outlook.com.au)

- Event Coordinator, Sponsorship , Trading
- ARTHUR, 0419 794 665 (Text preferred)
- Treasurer, Competition - PALMA, 0417 716 211
- General Enquires - JANETTE, 0428 224 979
- Competition - DIANE, 0407 784 762
- Assistant Coordinator - BOB, 0407 341 400
- Publicity, Newsletter - PAT, 0400 818 029
- Camping - RUSSELL, 0429 047 003 (Text only)