



19—22 APRIL 2019.....

# G E M B O R E E

..... ROCKHAMPTON

JANUARY 2019

## WELCOME TO 2019

Hopefully everyone has enjoyed the festive season and is now happily settled in to the new year. With less than three months to go, the GEMBOREE committee is extra busy as competition entries are now in, and camping being arranged, and all the fine-tuning has to be attended to. Bookings for camping will be accepted right up until the day of the event but, as you would appreciate, early bookings will greatly assist the organisers.

## COUNCIL FUNDING

GEMBOREE 2019 received a wonderful Christmas present in the form of some very generous funding from the Community Assistance Program administered by the Rockhampton Regional Council. The many hours of hard work spent in preparation of the submission has not only paid off financially but has also proven a worthwhile exercise in sorting out our priorities and putting them into order.

GEMBOREE 2019 has had fantastic support from Council since they first found out about us in 2017. The team from the tourism unit at Advance Rockhampton has been working closely with us to ensure a memorable experience for visitors during GEMBOREE 2019. This interest has extended to our local councillors who, headed by Mayor Strelow, work tirelessly to promote the development of the Region.

*'It's very fitting for our Region to play host to a tradeshow of this kind especially with our roots in the Mount Morgan Gold Mine and with a number of Gemfields in neighbouring communities, Rockhampton is the best vantage point to explore these unique attractions in Central Queensland,'* Mayor Strelow said.



### INSIDE

- Trader - Soul Jewels
- Accommodation
- Sponsors—Rockhampton Regional Council, Imparja, The Morning Bulletin
- Planning the Journey
- Trophies—Harold Evans and Jack Ryding
- Carving Demonstrations and Workshops
- Monto lapidary club
- Field Trip, Raffle and Sponsorship pages

*'We know the importance of ensuring the Region is alive with events during the Easter break and an event like this bringing thousands of visitors is a fantastic opportunity for our community to experience something new and it's great for our local economy too.'*

GEMBOREE Coordinator, Arthur Cleary, accepts the cheque from Rockhampton Regional Mayor, Margaret Strelow.

*'This is a great honour,'* said Arthur. *'It takes a lot of the worry away and gives us confidence in being able to present a truly worthwhile and secure experience for our visitors and locals alike.'*

## THIS MONTH'S TRADER



Our trader for this month is **Soul Jewels** which specializes in offering "Healing Gems and Crystals". This information is provided by proprietors Shanti Cantrelle and Dr Lilliana Corredor.

### Soul Jewels are Good for the Soul!

Our gems and crystals are washed and cleansed of "discordant energies" anchored in them during extraction and through handling before they reach us. Remember that both gems and crystals "store and emit" energy. After washing them, and clearing discord in them, we "program" (encode) them with Healing energies.

We sell high quality jewellery with gems set in Sterling Silver and coated in 14kt white gold, or in solid 14Kt yellow gold.

We also offer a variety of crystals, and specialize in large "rare" minerals and "collectors' pieces".

Our stall is a "Fundraiser" rather than a normal business. All proceeds from sales support our "Social & Environmental Campaign for the Mekong River" in SE Asia.

See our website: [www.scientists4mekong.com](http://www.scientists4mekong.com)

We look forward to sharing our wonderful gems and crystals with you in the Walter Pierce Pavilion at the GEMBOREE.



Dr Lilliana Corredor with Russian "Elite SHUNGITE" on left. It protects against Electromagnetic frequencies (EMF) generated by all appliances. It has empty molecules that store

those EMF. Its study won a Nobel Prize! Used also as jewellery and on mobile phones to protect the body. It helps the person be grounded. It has been used for over 400 years to "Purify Water". Studies are underway for its use in "waste-water treatment". We sell all forms of shungite.

On right, large SEPTARIANS (Dragon Eggs) from Madagascar. It's rare to find them whole (some on far right have the "lids"). These are made of cretaceous volcanic material that fell in the seabed, and became fossilized bentonite mud with mostly calcite crystals inside (sometimes find small seashells), and a brown exterior with aragonite.

Also called the "Healers Stone" or "Stone of Transformation". Helps to protect the physical and energy bodies, and increase clarity and intuitive insights. Helps to successfully manifest your creations (desires) in the physical world."

## Accommodation revisited



### David Motel

Another offer of discounted accommodation has come through from the **David Motel** which is just 4.1 km from the Showgrounds.

*Hi, I'm Melodie from the David Motel (Rockhampton) and we've had some lovely people booking in for the GEMBOREE today.*

*We're a lovely, quiet and clean Motel on the north side of Rockhampton.*

*We are more than happy to offer 10% off to anyone from the GEMBOREE that books with us!*

*Double Room \$ 97.20 (Saving of \$10.80 per night)*

*Twin Room \$106.20 (Saving of \$11.80 per night)*

*Family Room \$112.50 (Saving of \$12.50 per night)*

*All rooms look out onto a beautiful Pool and BBQ and Garden area. We also have onsite a Cook who provides amazingly delicious meals.*

*To book simply call us on 0749274333 or email us and say GEMBOREE!*

**The David Motel, 209 Musgrave Street, North Rockhampton, Queensland, 4701. [www.davidmotel.com.au](http://www.davidmotel.com.au) Telephone (07)49274333, [info@davidmotel.com.au](mailto:info@davidmotel.com.au)**





*Ferroan Dolomite and Bismuthinite from Biggenden mine*

## SPONSORS

If you check out our Sponsors Page, page 9, you will see that we have three new additions to the page: The Rockhampton Regional Council, IMPARJA and The Rockhampton Morning Bulletin.

As noted on page one, Rockhampton Regional Council, is most supportive of our efforts to bring an event of significance to Rockhampton and QGCA is most grateful to them and to all our other sponsors.

The other new faces are IMPARJA and The Rockhampton Morning Bulletin. One of our biggest challenges is to successfully market the GEMBOREE so that enough people are interested enough to come.

IMPARJA has been most generous in providing 440 spots on IMPARJA, GO and GEM over four weekends prior to the event. We are in the process of having a 30 second ad made for this purpose. It may also be used for other advertising and will go on our Facebook site and YouTube. The Morning Bulletin has offered us three ads: 7th and 22nd March and 13th April. Other advertising ideas are being explored and hopefully further sponsorship will be found to support them.

GEMBOREE 2019 is most appreciative of the generosity of all its sponsors. Special mention must be made of our first sponsorship, the **RAFFLE** prizes featuring Central Queensland gemstones and jewellers. The committee is hoping that tickets will be purchased online from all around Australia but so far sales are slow. See Page 8 on how to buy tickets and help to make the GEMBOREE a success.

Buy your  
tickets  
online!

## Accommodation continued from P2

### Other Offers

**Camping at the showgrounds** (available 16-29 April). See [www.aflaca.org.au/gemboree/](http://www.aflaca.org.au/gemboree/) for registration forms.

**The Edge and the Empire Apartment Hotels** (see July Newsletter)\*

**Archer Park Motel and Best Western Stirling Motel** (See May Newsletter)\* Archer Park has three pet friendly rooms and The Stirling has one. They are only 350m from the Leagues Club which has a good range of meals.\*

Newsletters available on [www.aflaca.org.au/gemboree/](http://www.aflaca.org.au/gemboree/)

As mentioned in the October Newsletter, Easter accommodation in Rockhampton could be in short supply so early bookings are advisable.

## PLANNING THE JOURNEY

The GEMBOREE booklet, published Easter 2018, as well as being about the actual Show, is also about the journey. See [www.aflaca.org.au/gemboree/](http://www.aflaca.org.au/gemboree/)

For those coming from the south, mention has been made of **Gympie** whose gold was the saviour of Queensland, and of **Miles**, where a world class collection of cut and polished fossil woods and ferns of the Jurassic period, known as the Norman Donpon Collection, is housed at the Historical Village <http://mhv.org.au/> The Gold Mining and Historical Village of Gympie also houses The Gympie Gem Club Collection. <http://www.museum.gympiegoldmuseum.com.au/>

Another place that has been recommended is the **Biggenden Quarry**. Biggenden is a former mining town which contributed to Queensland's prosperity for over a century producing magnetite, bismuthinite, native bismuth, gold and chalcopryrite. Numerous crystal-lined fissures and cavities (vugs) were encountered during underground mining, some as long as 20m that 'a man could walk into' with calcite, siderite, magnetite and quartz the dominant crystals lining the walls.

An enlightened policy from 1966 to 1999 saw miners officially allowed to extract mineral specimens and give them away or sell them to mineral collectors who often gathered at the mine car park to see what had been uncovered. Many Australian mineral collectors and gem clubs have fond memories of visits to the car park over the years, obtaining some spectacular specimens that would have otherwise been lost to the mullock dump or treatment plant. The mine yielded world-class terminated bismuthinite crystal specimens which are highly sought today but rare, along with a wide range of other well-crystallised species, notably carbonates.

Biggenden Quarry has a shop and a museum displaying rocks and minerals collected in the early years.

Open Monday -Friday 7am-4pm. No fossicking.  
(07 4127 1311 –Tasha)

From <https://www.mindat.org> and *Gold, Bismuth and Magnetite, The Biggenden Mine* by 'Bill' Moores, former QGCA President.

# TROPHIES

This month we discover the people behind two more of the trophies that are being presented at the GEMBOREE. They are Harold Evans and Jack Ryding. Sadly, both these gentlemen are no longer with us but both were very influential in the development of the Lapidary movement.

## HAROLD EVANS

*This information was supplied by Michael Quinn, Editor of the VGCA Pointer. The Harold Evans Trophy is awarded to the Intermediate Champion Lapidary. This year it is being awarded to the competitor with the highest aggregate score in any **three of the four** Sections I.1A.2, I.1B.3, I.11.2 and I.25.2.*

Harold was a member of Diamond Valley Gem Club and passed away on the 25<sup>th</sup> October 1982.

Harold was known as a man of great knowledge in the field of lapidary. He was a quiet achiever who inspired others to participate in the various competitions, not only for the competition but also for the interest of others.

He was well known for his Display Showcases in his own club show, the Royal Show and in many other club shows. In 1980 he won the Design Award in the Nunawading National Jewellery Competition.

He was a gentle man with a pleasing personality and always helpful to others.

This trophy, started at the 1983 GEMBOREE and was set up by Tony Annear who donated the trophy. You had to enter **ten** different Sections at that time, including Cutting cabs, Jewellery, Enameling, Carving, Showcase, Minerals, Fossils, Faceting, Novelty Gem Craft and Tumbled Stones.

To quote Val Annear "He was an excellent help while travelling Australia, with information and maps on fossicking areas. He was a special friend."

## JOHN S. RYDING

*This information was supplied by AFLACA Historian, Janett Maunder, and was taken from an article in VGCA's Pointer, March 1982. The article was written by Maurice Etccl. The John S. Ryding trophy is awarded for Section O.18C.1, Hand Fabricated Jewellery with natural Mineral/fossil specimen/s set by entrant.*

John Stirling Ryding died 6<sup>th</sup> December, 1981, after a short illness. He migrated to Australia from England



Entries in Section O.18C.1, 2018 GEMBOREE

with his parents in 1910 at the age of 8 years. Later he became apprenticed as a watchmaker, working for the famous houses of Gaunts, Burmeisters and Holdsworths until he set up his own business in York House as a watch repairer.

During the war he manufactured tools and gauges for the services, working his factory three shifts to keep up with production. Also, during this period, he became an instrument making instructor at RMIT teaching trainees. After the war he continued at RMIT teaching watchmaking.

He established the firm of Rytime Robilt, manufacturing clocks for the home market and for export all over the world. The name Robilt survives to this day as Robilt Lapidary Supplies, operated since 1991 by John Wylie of Melbourne.

During a trip to Queensland in 1964 he became interested in gemstones and designed a machine for cutting and polishing them. It proved so successful that, over a space of 15 years, many thousands of these machines were produced and sold in Australia, England, Spain, Norway, Sweden, Holland, South Africa and New Zealand.

He was a member of the Esperanto Club for many years and became the Australian delegate for travel, and on behalf of the Esperanto Club, spoke on radio in Vienna, Austria. He travelled extensively all over the world, and made many friends through the Esperanto movement, most of whom he corresponded with regularly.

Some of his hobbies were painting, photography, gem cutting, languages, travelling and music. At the age of 76 he learned to play the organ. He had a love for life: he enjoyed camping, fishing, caravanning, scuba diving and even snow skiing although, when he first took up this sport at the age of 68, he broke his leg on the first day and spent 7 days in Bright Hospital.

At the time of his death he was a foundation member of the Lapidary Club of Victoria and a life member of the Beaumaris Lapidary Club where he taught silversmithing. He was a man who enjoyed everything he did and he did more things than most. He was a true friend and gentleman to all those who knew him.



## CARVING DEMONSTRATIONS AND WORKSHOPS

Throughout GEMBOREE 2019 there will be demonstrations of various aspects of lapidary related skills. One demonstration not to be missed will be Kathy Selwood's. She will be showcasing the age-old skills of carving, cameo and scrimshaw. Kathy is from Orange, NSW where she is a member of the local lapidary club.

Kathy has been carving from the age of six years, with soap as her first material. Since then she has worked in bone, stone, shell and other mediums, acquiring prize winning skills along the way. In her very first



GEMBOREE, Glen Innes, 1995, she gained a third place. She has since progressed to win placings in carving, cameo and scrimshaw in the majority of NSW State competitions and most Australian GEMBOREEs. Along with these achievements, Kathy adds her skills in enamelling, jewellery, faceting, wire-wrapping, gemtrees and just about every other aspect of lapidary. Kathy is a qualified AFLACA judge in carving, cameo, scrimshaw, cabochons, gemtrees, novelty gemcraft and enamelling, so her talents are utilized at many competitions including GEMBOREEs.

Kathy's greatest pride, however, is in her teaching ability and her passion for passing on her knowledge to others, commencing with her home club at Orange, where she delights in mentoring her fellow club members. She has conducted many workshops throughout NSW since 2005 and more recently in South Australia. When Arthur Cleary met with Kathy during GEMBOREE 2018 he invited her to demonstrate at Rockhampton in 2019.

## WORKSHOPS

Because of the difficulty the 2019 GEMBOREE Committee has had sourcing qualified judges in the specialized arts of carving and scrimshaw in bone, shell and stone, it was determined to address this issue. Consequently the Queensland Gem and Minerals Clubs

Association has engaged Kathy to conduct a **two-day Carving Judges' Course** immediately after the GEMBOREE, 23-24 April, to bolster the number of carving judges. Places are limited to five with the hope that there would be one nomination from each state. For details and requirements contact [GEMBOREE2019@outlook.com.au](mailto:GEMBOREE2019@outlook.com.au)

Following the Judging Course, a **carving course**, conducted by Kathy and hosted by the Rockhampton Lapidary Club, will take place Friday 26th April - Sunday 28th April. It is designed primarily for beginners but those who wish to improve their carving skills may also apply. The course will cater for five participants with preference given to members of Central Queensland Gem and Mineral Clubs Association who intend to use these skills to develop this lapidary hobby for future generations. For details and requirements contact [GEMBOREE2019@outlook.com.au](mailto:GEMBOREE2019@outlook.com.au)

The Rockhampton Lapidary Club has been fortunate in receiving funding from the Regional Arts Development Fund administered by the Rockhampton Regional Council to help finance these courses; another great example of RRC support.



**You will be able to see Kathy at work in the James Lawrence B Pavilion at GEMBOREE 2019.**

# THE MONTO LAPIDARY CLUB



<https://www.facebook.com/Monto-Lapidary-Club>

Contributed by Berendina Wurth and Neil Patzwald, a founding member of the Club

Monto, 235 km south of Rockhampton, is a small but vibrant country town with fewer than 2,000 people. The Lapidary Club has been in existence for approximately 50 years. For the first 20 years the club held its meetings at members' homes and workshops would be held in conjunction with the meetings. Sometimes the meeting would be combined with a field trip. Some members had equipment they would share. The club had a flat lap that was taken to the meeting venues and four or five people would sit around polishing stones.

About 30 years ago the Monto Shire Council generously made the original Council Chambers available to the Arts and Crafts groups of Monto. They also supplied a shed at the rear of the building for a workshop. This building is known as Sunshine House as for many years it was the home of Sunshine Farm Machinery in Monto.

Over the years membership grew and the club acquired more equipment. When the Central Queensland Gem and Minerals Association formed we became one of the members and participated in the running of the Central Queensland Gem Shows and shared in the profits. These funds, and those raised by ourselves, helped



*Ron Dunn with a few of his many trophies*

enormously in setting up and improving our workshop.

Although we have always been a small club we have had some very talented people. To mention just a few: Tom Lynn, one of our original members, won many competitions around the country and Dianna Kuhn was Australian Junior Champion three years in succession. In recent times Ron Dunn has had a lot of success in

various Gem Show competitions. Every year some of our members would compete in the Central Queensland Gem Clubs Show and for the last two years, following the demise of the Central Queensland shows, we have competed in the Rockhampton Gem Expo. At the last Gem Expo four of our members sent work in and all four got either a prize or a special mention - not a bad result for a small club.

For many years we ran a special competition section at the Monto Agricultural Show but nowadays we are content to mount a display and compete in other competitions.

Over the last few years some of the older members have moved away but a few new members have joined as well and at the moment we have eighteen paid up members. That's not a lot of people, but everyone who attends the workshops is keen to get a good result.

Our members engage in a variety of lapidary activities, mainly polishing and faceting. The club has lately branched out into wire wrapping and silver-smithing. Wire wrapping in particular is popular and those members involved in that are producing some great results.



*Some of our recent efforts in wire wrapping*

There is some other good news. Just recently we were awarded a grant and we will now be able to update our workshop as well as purchase extra equipment. We are looking forward to having the workshop insulated, new lights and curtains and some comfortable chairs at the workbenches. These improvements will ensure the continued enthusiasm of members and hopefully encourage more to join us.



# PROPOSED FIELD TRIP TO GEMFIELDS EASTER SATURDAY, 20 APRIL, 2019



- Travel to the Central QLD Gem fields in a 57 seat luxury coach. (Min 35 required)
- **Depart the Show grounds at 6 am** sharp, and arrive at Sapphire at about 9.30am.
- On the way movies about the Gemfields will be shown and Rob, your guide who lives on his claim at the Gemfields for part of the year, will tell some stories about the Gemfields. He also has a great knowledge of the mining and agricultural country that you will be passing through.
- On arrival at **Sapphire** the first stop will be at **Pat's Gems**, where you will be served **morning tea** and **given a free bucket of sapphire wash** to be washed on site. Bound to contain some sapphires and zircons.
- Next stop will be the **Bobby Dazzler Sapphire Mine Tour**. At this point, half the group will be conducted on an **underground mine tour** while the other half has a **BBQ lunch** and vice versa.
- At both places there will be ample time to look at their excellent products and, if you wish, to make purchases.
- Depending on time there are other very good traders to visit and there are some unique buildings worth seeing.
- **Departure** from the Gem fields must be by **2.00 pm** in order to reach Rockhampton by 5.30pm, as this is the night of the Official Dinner.

If you wish to be on this trip, please make sure you book and pay early.

## COST \$175

(Includes bus trip, morning tea, a bucket of wash,  
mine tour and BBQ Lunch)

[GEMBOREE2019@outlook.com.au](mailto:GEMBOREE2019@outlook.com.au)



[GEMBOREE2019](#)



# GEMBOREE 2019

## FUNDRAISING RAFFLE

*Buy your  
tickets online!*



Tickets now on sale from

[www.raffletix.com.au/Gemboree2019](http://www.raffletix.com.au/Gemboree2019)

\$5 each, drawn Monday 22 April 2019



**8.5ct Sapphire Pendant**

Sapphires Donated by

*Coolamon Mining*

Designed and Fabricated in

Gold by

*Judith Hopwood*

Value \$5,934



**Chrysoprase and Sapphire  
Earrings set in Gold**

Designed and Donated by

*Rod Beattie*

Value \$4,168

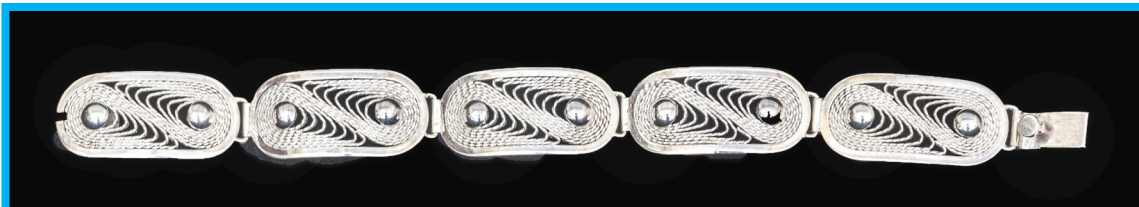


**Boulder Opal and Sapphire  
Brooch/ Pendant set in Gold**

Designed and Donated by

*Rod Beattie*

Value \$3,905



**Silver Filigree Bracelet with matching Earrings**

Made and Donated by *George Weier*

Value \$1,185

Valuations donated by







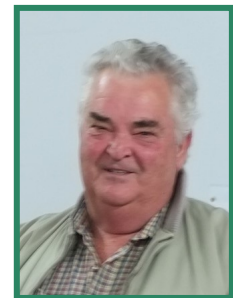
Rod Beattie  
Gems of Capricorn



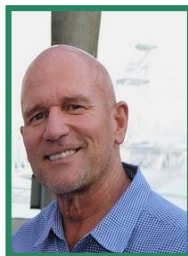
Coolamon Mining



Rockhampton Girls  
Grammar School  
Est 1892



George Weier  
Silversmith



Ian Bone  
GEMBOREE Marketing  
Ambassador,  
Promoter of CQ Gemstones

Janice Moriarty  
Central Highlands Ambassador  
Doctoral Candidate, USQ  
Principal Consultant **JM2Solutions**  
EMERALD QLD



#### THE GEMBOREE TEAM

(GEMBOREE2019@Outlook.com.au)

- Event Coordinator, Sponsorship , Trading  
- ARTHUR, 0419 794 665 (Text preferred)
- Treasurer, Competition - PALMA, 0417 716 211
- General Enquires - JANETTE, 0428 224 979
- Competition - DIANE, 0407 784 762
- Publicity, Newsletter - PAT, 0400 818 029
- Camping - RUSSELL, 0429 047 003 (Text only)