



19—22 APRIL 2019.....

G E M B O R E E

..... ROCKHAMPTON

FEBRUARY 2019

VISIT THE

GEMFIELDS

AT THE GEMBOREE

A big attraction at the GEMBOREE will be the opportunity to visit, in one area, representatives of the Gemfields who have combined to present A TASTE OF THE GEMFIELDS

Article contributed by Jenny Elliot

When it was first announced that the 2019 Australian GEMBOREE would be held in Rockhampton, a group from the Central Queensland Sapphire Gemfields saw this as a unique opportunity to promote the attractions of their area and to teach potential purchasers of gemstones about the magnificent gems produced throughout Central Queensland.

This group has secured a large area in the Walter Pierce Pavilion where there will be a **Mini Gemfields** covering all aspects of the Gemfields: mining, faceting, jewellery manufacture, tourism activities such as fossicking and bucket washing facilities, with a theatre to show a rolling montage of gem field life and activities.

The group consists of people who live and breathe the mystique of sapphires and who, among them, have accumulated hundreds of years of experience in sapphire mining and faceting and all other aspects of the industry. Purchasers can be assured of buying with confidence as the origin and authenticity of the all products on sale is guaranteed..

Max and Helen Bradley have been hand mining their underground claim at Rubyvale for over 40 years. Everything they have has come from their own mining, and has been cut by Max himself. Max started gem cutting in 1977 and for many years ran a gem cutting school at the Emerald TAFE. He still passes on his knowledge and hints to others and will be demonstrating gem cutting at the 2019 GEMBOREE. Max

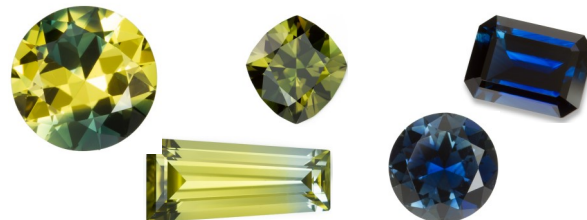
welcomes anyone to come to watch, and to ask questions.

Pat Vine has spent much of her life on the Gemfields. She set up Pats Gems in 1979 and her well known fossicking park of the same name 1989. There Pat sells local sapphires and jewellery, and caters for all tourism needs including bucket wash facilities, meals and snacks, and tours of the area. Pat will be demonstrating the use of a Willoughby as well as selling bags of local sapphire bearing wash.



Working a Willoughby

GEMFIELDS



CONTINUED

Noel Deeley is a fourth generation miner with a lifetime of experience on the Gemfields, having grown up there during the very busy 1950s and 1960s. He has now retired, but he and his wife Lesley still travel to gem shows. Noel and Lesley have for sale beautiful sapphires from his collection, along with some very fine gold nuggets from the Clermont area, fruits of his favourite hobby.

Louise Graham, Pat Vine's daughter, is carrying on the family tradition through her business, Skippy's Gems. Louise will be selling sapphire jewellery and faceted stones as well as craft supplies including needs for wire wrapping and polishing.

Ola Hobin has been on the Gemfields as long as anyone can remember! Ola was the only qualified gemmologist and valuer back in the busy years and her business, Capricorn Gems and Crafts, became the focal point for many buyers and sellers of sapphires. Ola, now retired, is offering for sale much of her lifetime collection of gems.

Jim Nesbitt, Sapphire Showcase, has operated at Sapphire for several years. Jim buys sapphires from local miners to cut and set into jewellery and can therefore guarantee the authenticity and origin of all his material. Jim will have on sale a wide range of jewellery.

The Gemfields Lapidary & Craft Club has many members who have spent most of their lives on the Gemfields and can be of great assistance to visitors. They will be displaying and selling jewellery which has been designed and crafted by their members as well as demonstrating some of their skills. Sylvia will be wire wrapping cabochons and Christel will be making chain maille.

Rod Beattie, Capricorn Gems, first became interested in sapphires when he worked for some of the bigger operators on the Central Queensland sapphire fields in the early 1980s. He has since lived for many years in Kanchanaburi in Thailand, where he set up a museum dedicated to the infamous World War II Burma Railway. Rod is a skilled sapphire faceter and is also highly skilled in cutting and polishing Marlborough chrysoprase and Queensland boulder opal, all of which he will be offering at his stand.

Jenny and Jim Elliot, Coolamon Mining Pty Ltd, first became involved in sapphire mining in the early 1980s when Noel Deeley invited Jim to use his engineering and mining skills to set up a contract with the

Queensland Government to mine the road reserve from Sapphire to Rubyvale, and to construct a new bitumen road to replace the old dirt track. Following the completion of this project in 1989, they formed Coolamon Mining which has since become a major supplier to Australian manufacturing jewellers. Noel has retired and Jim and Jenny are now ably assisted by Amelia Chafer whose father, Andrew, ran the marketing arm for Coolamon for many years. Everything that Coolamon offers for sale comes from their own mines and they issue certificates to guarantee the authenticity and origin of their products.

Linda Drake has used the knowledge and experience gained by her lifetime on the Gemfields to prepare the film segments, with the assistance of her friend Barbara Beazley. This 'picture theatre' section of the Gemfields exhibition will present information about activities on the Gemfields which should be of great interest to people planning trips to the area, as well as to those reminiscing about past experiences. Further information can be gained from Linda at the Gemfest tent which will be running 'Stake-a-Claim' with prizes of gemstones from the Gemfields.

A visit to the 'Gemfields' is a must at the GEMBOREE!

There is also the opportunity to actually take a day trip to the fields and experience first hand what is on offer - See Page 9.

THIS MONTH

- Visit the Gemfields
- GEMBOREE Updates
- Traders
- Trophies
- Travelling North
- Hervey Bay Gem and Minerals Club
- Gemfields Field Trip
- Raffle and Sponsors



UPDATES

CANCELLATIONS

- The Gemmological Association/ Rockhampton Lapidary Club Rock the Tropics Tour (See November-December Newsletter) has been deferred.
- Ray Richardson from Crystal Mining (July Newsletter) is unable to come to the GEMBOREE. Unfortunately we will miss out on seeing his famous sapphires.

ACTIVITIES

Although the GEMBOREE program has not yet been fine tuned a variety of activities have already been planned. The list is incomplete and there could be some changes.

DEMONSTRATIONS

- Faceting
- Use of a microscope in gemmology
- Photographing Gems
- Straw Broom Casting
- Lost Wax Casting
- Casting in Stone
- Equipment used by Gemmological Association of Australia
- Enamelling
- Freeform Cabochons
- Carving
- Experience in Mining Gems in Thailand & Vietnam

LECTURES

- Orientating sapphires to get best colour
- Wire Wrapping Tools
- Diamond Fossicking in Australia
- Tools for Carving
- 25 years of exploring and researching 'Death Railway' and the men who were POWS
- + more to be finalised

FIELD TRIPS

Saturday 20 April

- Day trip to the Gemfields, see Page 9.
If interested please email GEMBOREE2019@outlook.com.au with the subject: Gemfields Trip
- **Sunday 21 April, Capricorn Caves**, self drive, two hours exploring the fossils in the caves and examining fossils in the Bone Room.
\$40 per person.
- **Tuesday 23 April, Mt Hay (to be confirmed)**
Self Drive. \$50 to collect a 20 litre bucket of Rainforest Jasper. Bring your own bucket.
- Planning is underway for **bus excursions**

provided by a local company to take place before, during and after the GEMBOREE e.g. Capricorn Coast, Mount Morgan, Rockhampton City, etc

ENTERTAINMENT

Friday

- Australian Facetors Guild Meeting
- Evening, self-funded shared meal in Food Court, Entertainment to be arranged

Saturday

- Prince and Princess, entry forms before 9.30 am
- Official Opening
- AFG announcement of Donation to Pancreatic Cancer Fund
- Announce Prince and Princess
- AFLACA Committee Meeting
- Combined GEMBOREE-GAA dinner, Jack Taylor Memorial lecture, Awards, \$25 per person

Sunday

- Breakfast provided for campers and volunteers, Food Court
- AFLACA J&R Meeting
- AFLACA AGM

GEMMOLOGICAL SYMPOSIUM LECTURES TO DATE

- Responsible and ethical jewellery—Ian Bone
- The Corundum conundrum—Grant Hamid
- Lightning Ridge Opal—Jenny Brammall
- Tales of MIA in SE Asia mines—Rod Beattie
- Colour, how, why, and where—Laura Phillis
- Rainbow Lattice Sunstone—Stacey Lim
- Cyber Space Security—Brian Hay

For details and booking see www.gem.org.au

SPECIAL NOTICE—WWII POWS

Rod Beattie has offered to provide information at the GEMBOREE on almost all Australians who were Japanese Prisoners of War during WW II.

The information he needs to positively identify the person is

- **Full name and one further piece of information**
 - ◇ Place of birth
 - ◇ Next of kin
 - ◇ Birthday
 - ◇ Service number or other identifying feature

Send to the GEMBOREE committee before 15 April via email GEMBOREE2019@outlook.com.au with the subject: World War II Prisoner.

Rod will also have on display a collection of sapphires and chrysoprase in James Lawrence A.

News on other displays next newsletter



THIS MONTH'S TRADERS

This month we feature two traders,
BR GEMSTONES and GEMS + JEWELS

BR GEMSTONES , Contributed by proprietor, Brian Pepperall

Its sometimes a bit hard to decide when a hobby becomes a business, but we, Robyn and I, have probably been fairly serious about buying and selling gemstones for fifteen or twenty years. We have both been connected with gemstones the whole time we have been together. Prior to that my father introduced me to gold prospecting and gemstone fossicking before I was a teenager. Like most people we have been digging, buying and swapping over the years. Along the way you accumulate quite a lot.

Eventually we established contacts in many countries to supply those stones which were unavailable in Australia. By going right to the source we were able to have a better idea of the authenticity of the stones, the assurance of untreated materials and a knowledge of the provenance of the rough.

Our major source countries are Madagascar, Tanzania, Pakistan/Afghanistan and Nigeria, as well as Australia. Some of these countries have produced premium deposits of exceptional quality and we have been fortunate to obtain material direct from the source. Our aim was to provide a wide range of both gemstone species and also gemstone locations. Additionally, we wanted to hold stock of rare and unusual materials.

As it stands now we have a wide range of facet rough, an extensive range of cut stones which have been produced from our own rough (we do not import cut stones) and a small range of jewellery. In addition there are many cut opals, courtesy of my father who was also an opal cutter, and a range of mineral specimens which we usually get as a side product of our rough purchases.

Our aim is to have unique, individual cut stones and jewellery at affordable prices, rather than the mass produced goods which are so widely produced these days. One of our specialities is to custom cut stones to meet your requirements.

Part of our business comes from sales at Gem Shows and GEMBOREES in Queensland and Northern New South Wales, which we enjoy as it allows us to meet our customers and ome suppliers and to gauge the market. We also sell on line

through our website. If you don't see what you want in the cart system you can use our email ordering and enquiry system: www.brgemstones.com.au/

Some of the rarer gems available from Brian and Robyn



Clinohumite, Tajikistan



Kornerupine, Madagascar



Danburite, Madagascar

BRGEMSTONES

Quality Facet Rough
Faceted Stones
Rare and Unusual Gems

Phone Number: 07 32818207
PO Box 586, Ipswich, Queensland 4305
Email: gem_stones@bigpond.com
Web: www.brgemstones.com.au

See Page 5 for GEMS + JEWELS



Contributed by Birgit and Jürgen Wasshausen

Master Goldsmith Birgit Wasshausen and Gemmologist Jürgen Wasshausen are the husband and wife team behind Gems & Jewels from the Sunshine Coast Hinterland.

They started their business in Maleny 13 years ago after being self-employed in this trade for over 20 years in Germany.

As a Gemmologist Jürgen has travelled extensively to buy cut gemstones from all over the world to build up his huge collection of precious stones and pearls.

Birgit did her apprenticeship 37 years ago in a jeweller's workshop in Dresden, completed her degree as a Master Goldsmith in 1988 and has worked continuously in the trade as a manufacturing jeweller ever since.

The couple have been combining their talents to produce high quality gemstone jewellery and have a wide range of exclusive jewellery with rare genuine gemstones for sale.

There are so many to choose from: Diamonds, Sapphires, Rubies, Emeralds, Aquamarines, Tourmalines, Tanzanites, Opals and various Pearls, just to name a few.

If you fall in love with a special Gemstone, Pearl or Opal in Jürgen's collection, Birgit can fashion it into bespoke jewellery. Or you might see a piece in Birgit's treasury you would like to call your own.

Birgit's work reflects her passion for fine individually designed and traditional handcrafted jewellery of high quality in a contemporary style. Every piece is a one-off, mostly set in 18K Gold, but also 24K, 14K and combinations in Gold & Sterling Silver.

"I like asymmetric designs full of verve, swinging lines, but still simple jewellery that will show the full beauty of a special stone or pearl. Sometimes less is more," says Birgit.

Visit our Facebook page "[Wasshausen Gems & Jewels](#)" to see some of our fine jewellery.

We're looking forward to welcoming you in the Walter Pierce Pavilion at the GEMBOREE in Rockhampton.



TROPHIES

This month two more great contributors to the lapidary movement are featured. They are Ted Kollar and Jim Johnson. The information was supplied by AFLACA Historian, Janett Maunder. The Jim Johnson Trophy, donated by the Gem and Minerals Association of South Australia, is awarded to the Champion Novice Mineral Entrant and the Ted Kollar Trophy for Open Solid Opal Cut is donated by the Victorian Gem Clubs association. Ted's story provides another link between GAA and lapidary.

JIM JOHNSON, 1917-1983

(Taken from a biography by G M Hore)

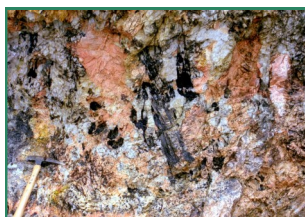
Jim was born at Moonta, He attended the school at Moonta Mines and, as a child, fossicked for minerals in the dumps around the mines, beginning a life-long fascination with minerals. His early work was in various mines including the Triple Chance Mine, SW of Broken Hill. In 1950 he and two others formed a syndicate to work pegamites near Old Boolcoomata Homestead, west of Broken Hill. Over the years he took many positions, all to do with minerals, including producing geological maps for the department of Mines, SA.

In 1972 he was appointed Honorary Research Worker at the South Australian Museum where he documented collections he had given to the Museum in 1942 and 1946. While at the Museum he continued his field investigations and writing on South Australian minerals. Information about his manuscripts held at the South Australian Museum can be found on <http://archives.samuseum.sa.gov.au/aa159/AA159-1.htm>

He was an honorary member of the Adelaide Gem and Mineral Club, a valued member of the Field Geology Club of South Australia and a Foundation Member of the Mineralogical Society of South Australia. His contribution to mineralogy in the State has been recognized by the establishment of a biennial Memorial Medal in his name. The first recipient in 1984 was co-worker, C R Dalgarno, senior geologist with BP minerals, Australia. Professor Allan Pring, Curator of Minerals at the South Australian Museum, received the JE Johnson Medal, in 2000.

His life work, A Catalogue of South Australian Minerals, was published by the Department of Mines and Energy just a few days before his death and he never saw it in print.

In 1986 the Jim Johnson Trophy was introduced to the GEMBOREE competition in recognition of Jim's 'long term and outstanding contribution to South Australian Mineralogy, his life-long love of minerals, and his unfailing willingness to help the novice mineral collector'.



TED KOLLAR - 1975

(Taken from a tribute by Tony Annear)

Ted Kollar came from Hungary to Australia after World War II and set up a watch making business in Bacchus Marsh. Soon after he moved to Melbourne where he was the prime mover in forming the first lapidary club in the state. It was formed as a part of the Gemmological association and known as GAA Gem Club. Over the four or five years many other clubs were formed, all stemming from this club.

Ted is probably best known for his involvement in Competition and Judging Rules. Prior to 1968 competitions were confined almost solely to the GAA Gem Club and he was virtually the only man considered capable of judging. At the first Gemkhana in 1968 Ted judged ALL the competition entries. Prior to the 1969 GEMBOREE at Beechworth he put on paper all the features which he judged and the points he allotted to each feature. These rules were published in 1968 and given in advance to all the competitors at the 1969 GEMBOREE. Again Ted judged ALL the entries.

In the following years Ted contributed many revisions to the rules which were officially adopted by the Combined Victorian Gem Clubs Association and later by all states. He was a founding member of both the Victorian and Interstate Judging Panels. The first Competitor and Judging Manual was published in 1973 and adopted by all states.

Training of judges was another first for Ted. He devised courses for training judges in cabochons and faceting and conducted courses in Victoria, South Australia and New South Wales.

He was a hard task-master but would go out of his way to help. Gemmology and the Lapidary hobby owe a lot to Ted Kollar.



TRAVELLING NORTH

As mentioned in the GEMBOREE booklet the journey to **Agate Creek** is for the intrepid enthusiast who wants the chance to find some of the best agates in the world. If this journey is decided on there are other attractions in the North. At **Mt Surprise** situated on the edge of the Undara lava tubes and 151 Km from Forsayth, you will find the Gem Den run by Pete and Pam Blackburn.

35 km inland from Mount Surprise, **O'Brien's Creek Campground** offers 25 acres of native bushland that has plenty of room for all styles of camping. There are shady sites along the banks of the Elizabeth creek and more open sites for those running on solar. Fire places are located throughout this pet friendly campground, with two amenities blocks and plenty of hot water for the showers. The campsite is on Mt Surprise Station with the nearby designated fossicking also on Mt Surprise Station land.

The campsite operator, Simon Harrison, phone 07 40623001, has supplied the following information and can issue fossicking licenses.

Try your luck area fossicking for Topaz, Aquamarine, Citrine and Smokey Quartz. These beautiful gems are all to be found in the O'Brien's Creek gem fields. Enjoy outdoor activities such as bushwalking, birdwatching and when the creek is running try your luck fishing. Paddle about in the creek or unwind and relax with a book at this quiet and secluded campground. Photograph the amazing sunsets, enjoy a campfire and then look up and marvel at the many bright stars, whilst either making new friends or enjoying a Sundowner with old ones. You will be sure to enjoy your stay.

Last year, Rockhampton Lapidary Club member, Rob



O'Brien Creek Campsite

Fry and his wife Kath, spent time at O'Brien's Creek and came away with some nice pieces of Topaz which Rob cut to yield these gems.



O'Brien Creek Topaz found and cut by Rob Fry

Pam and Peter, from the **Gem Den at Mt Surprise**, have been promoting the GEMBOREE in the north. They have provided this information:

The Gem Den is easy to find right in the main street of the tiny town of Mt Surprise. We issue licences, hire and sell fossicking equipment, and give heaps of info about our closest field being O'Brien's Creek. You get to handle rough gems to help discover the differences between Topaz, Smoky Quartz and Aquamarine which are the main gems of the area.

We have many gems on display for sale from all over the far north of Queensland. These include clear and blue Topaz, Aquamarine, Smoky Quartz, Garnet, Amethyst, Citrine, local Sapphires and a huge variety of other material all cut here.

We also have a huge range of jewellery for sale showing off most of the local gems being set in both sterling silver and 9ct gold. Some pieces we've made for customers using the local gold they have found themselves. How special is that!

Pete has been faceting for approximately 30 years now so feels quite happy to show people the lapidary machinery used and how it works to produce stunning sparkling gems to be worn with pride and enjoyment. He will have a couple of designs he has devised which are specific for the faceting of Topaz. They are very popular here and he is happy to share these with interested people.

There are 5 main fossicking fields plus gold areas on which to 'give it a go' but we do recommend travelling in a 4x4 as most access to these fields is on gravel roads. It's also best to be reasonably self-sufficient as some areas are fairly remote so to make your experience here more enjoyable carry your special needs with you. Of course you can always contact The Gem Den for up-to-date info on tracks and local knowledge. www.thegemden.com.au PH: 0740623055 or Email: pam@thegemden.com.au

Pam and Pete will be in the Walter Pierce Pavilion with information and gems from their local area



HERVEY BAY LAPIDARY CLUB

<http://herveybay.lapidaryclub.com.au/>

<https://www.facebook.com/pg/Hervey-Bay-Gem-and-Mineral-Club-Inc-1522318144744519/about/>

The Hervey Bay Gem & Mineral club Inc. was inspired by Bill Moores (See January Newsletter—Biggenden) in 1965. On the 12th October 1965 Mr Bill Moores, Adult Education officer, chaired a meeting called "The first meeting of the future Hervey Bay Gem and Mineral Club" in the Urangan Progress Hall.

The original club consisted of thirteen people and, in the early years, they met at a private house. By 1972 a lease of council land at Pialba was approved and by 1975 a building was erected. The official opening of this building took place 29 November, 1974. Mr W.J. Moores officially declared the club room open. There were 110 people present. Several Clubs were represented including Caloundra, Nambour, Gympie, Maryborough, Isis, Bundaberg and Gin Gin.

In 1976 our first gem show was held in the CWA hall Pialba and was so successful that it was decided to make it an annual event, taking place in July. Our Annual gem Show is now held at the Star of The Sea School on the last weekend of the school holidays in July. This Year it will be held 13-14 July.

By 1982 a membership of 82 was achieved with today's figures around 100.

In 2009 our original building was moved next door to the Museum and a new building was completed with the official opening in 2010.

The Hervey Bay Gem Club has six new faceting machines, upgraded cab and saw rooms.

The club runs silver classes for its members twice weekly and these are very popular.

Members do fossicking trips each year to all parts of the country and supply information to all members.

Our club members produce work of a high standard and are very competitive, especially in faceting. In 2016 member Barry Chapman was placed sixth overall in a World Faceting Competition held in Tasmania.



PROPOSED FIELD TRIP TO GEMFIELDS EASTER SATURDAY, 20 APRIL, 2019



- Travel to the Central QLD Gem fields in a 57 seat luxury coach. (Min 35 required)
- **Depart the Show grounds at 6 am** sharp, and arrive at Sapphire at about 9.30am.
- On the way movies about the Gemfields will be shown and Rob, your guide who lives on his claim at the Gemfields for part of the year, will tell some stories about the Gemfields. He also has a great knowledge of the mining and agricultural country that you will be passing through.
- On arrival at **Sapphire** the first stop will be at **Pat's Gems**, where you will be served **morning tea** and **given a free bucket of sapphire wash** to be washed on site. Bound to contain some sapphires and zircons.
- Next stop will be the **Bobby Dazzler Sapphire Mine Tour**. At this point, half the group will be conducted on an **underground mine tour** while the other half has a **BBQ lunch** and vice versa.
- At both places there will be ample time to look at their excellent products and, if you wish, to make purchases.
- Depending on time there are other very good traders to visit and there are some unique buildings worth seeing.
- **Departure** from the Gem fields must be by **2.00 pm** in order to reach Rockhampton by 5.30pm, as this is the night of the Official Dinner.

If you wish to be on this trip, please make sure you book and pay early.

COST \$175

(Includes bus trip, morning tea, a bucket of wash,
mine tour and BBQ Lunch)

GEMBOREE2019@outlook.com.au



[GEMBOREE2019](#)



GEMBOREE 2019

FUNDRAISING RAFFLE

*Buy your
tickets online!*



Tickets now on sale from

www.raffletix.com.au/Gemboree2019

\$5 each, drawn Monday 22 April 2019



8.5ct Sapphire Pendant

Sapphires Donated by

Coolamon Mining

Designed and Fabricated in

Gold by

Judith Hopwood

Value \$5,934



**Chrysoprase and Sapphire
Earrings set in Gold**

Designed and Donated by

Rod Beattie

Value \$4,168

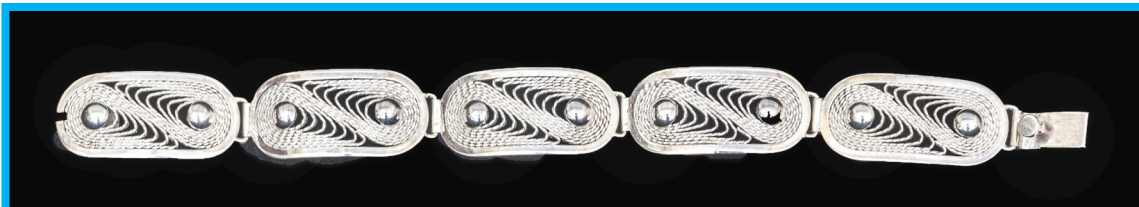


**Boulder Opal and Sapphire
Brooch/ Pendant set in Gold**

Designed and Donated by

Rod Beattie

Value \$3,905



Silver Filigree Bracelet with matching Earrings

Made and Donated by *George Weier*

Value \$1,185

Valuations donated by





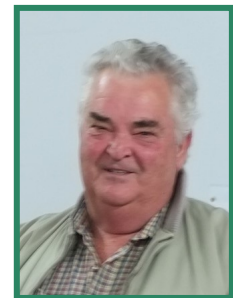
Rod Beattie
Gems of Capricorn



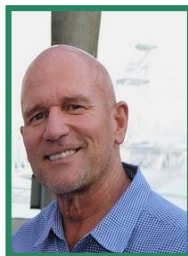
Coolamon Mining



Rockhampton Girls
Grammar School
Est 1892



George Weier
Silversmith



Ian Bone
GEMBOREE Marketing
Ambassador,
Promoter of CQ Gemstones

Janice Moriarty
Central Highlands Ambassador
Doctoral Candidate, USQ
Principal Consultant **JM2Solutions**
EMERALD QLD



THE GEMBOREE TEAM

(GEMBOREE2019@Outlook.com.au)

- Event Coordinator, Sponsorship , Trading
- ARTHUR, 0419 794 665 (Text preferred)
- Treasurer, Competition - PALMA, 0417 716 211
- General Enquires - JANETTE, 0428 224 979
- Competition - DIANE, 0407 784 762
- Publicity, Newsletter - PAT, 0400 818 029
- Camping - RUSSELL, 0429 047 003 (Text only)